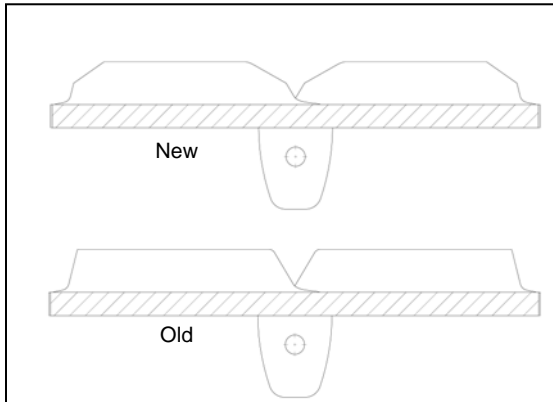




**Subject: NEW PRODUCT IMPROVEMENT**  
**Improved Treadbar Profile on wide Durabuilt Tracks**



As part of our commitment to continuous improvement, Camoplast is pleased to announce the latest enhancement to the Ag track line: **Even-Wear** profile treadbars for wide tracks. This new design feature will yield increased carcass life and lower vibration levels, while maintaining traction performance.

Over the past three years, lab and field testing by Camoplast R&D showed that wide tracks frequently experienced uneven wear of the treads. Treadbars outside the wheel path do not wear at the same rate as the inner treadbars; causing flexing on the outer edges of the track, rougher ride and in some cases carcass failure. In addition, the inner edges of the treadbar were susceptible to cosmetic nicks and gouges during the break-in period.

The design change will be implemented immediately as old stock is depleted. If required, new style tracks can be paired with existing stock with no adverse effect on over-all life.

PART NUMBERS AFFECTED

<b>630-3009</b>	<b>632-3003</b>	<b>652-3004</b>	<b>652-3008</b>
<b>630-2501</b>	<b>650-2517</b>	<b>632-2701</b>	<b>652-2702</b>
<b>632-3005</b>	<b>622-2001</b>	<b>650-2502</b>	<b>620-2500</b>
	<b>622-3007</b>	<b>622-2515</b>	

<b>1R1308</b>	<b>1R1075</b>	<b>1R1187</b>	<b>1R1232</b>
<b>1R1355</b>	<b>1R1186</b>	<b>1R1297</b>	<b>1R1283</b>

FEATURES AND BENEFITS

- Extended carcass life due to reduced flexing.
- Smoother ride as tracks wear more evenly.
- Better break-in appearance on inside edges.
- Less berming in turns – reduced field disturbance.



## Discussion

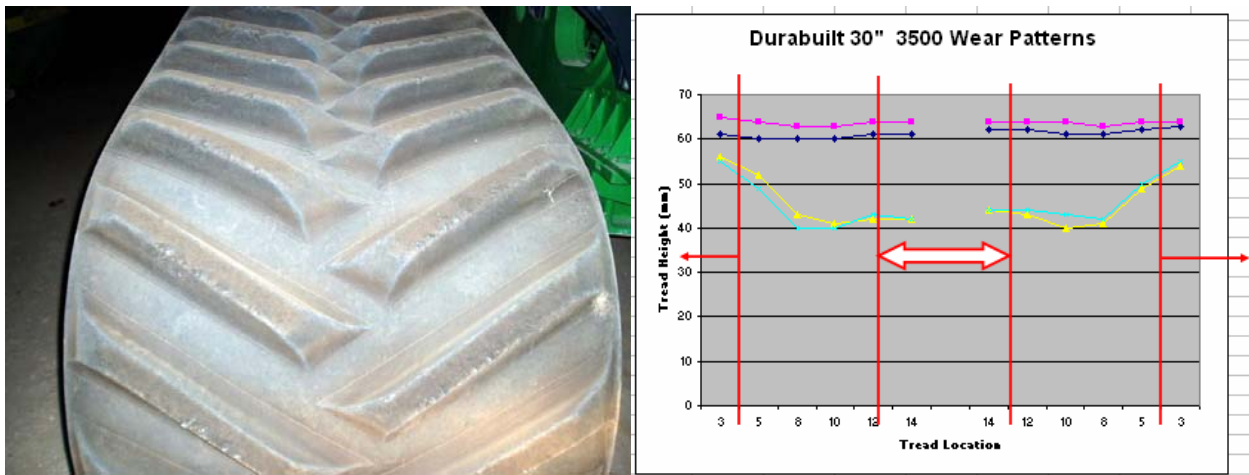
### Tread Wear

Photos 1 and 2 below show typical examples of a worn out Hi-Yield and competitor track. Note how much tread is left on the overhung edge (Ovals). Note also that this has caused additional stress on the carcass due to flexing which has moderately damaged the Hi-Yield track and caused a lost section on the competitor track.



Typical wide track uneven wear

In the graph below, imagine looking down a worn track from the view as shown in the LH photo. Note in the chart (Cyan and Yellow lines) how track treadbars wear unevenly over time, with the center section wearing more quickly than the outer and inner edges. By modifying the profile (arrowed areas in the chart) the treadbar will wear much more evenly.





## Improved Break-In Appearance

Another benefit involves the break-in of tracks in more rocky or abrasive conditions. The reduction of the acute angle in the center of the track prevents inner edge tearing from occurring. This is a cosmetic appearance problem which can cause customers some concern.



Acute Inner Angle causing inner edge damage



Beveled Angle - causing no inner edge damage

### Summary

- Rowcrop tractor tracks 20" and wider include the new wear profile.
- Rowcrop narrow tracks (close to the wheelpath width) are unchanged (14", 16", 18").
- Tillage tractor tracks 27.5" and wider include the new wear profile.
- The new profile improves carcass life, smoothness of ride, and break-in appearance.

This change is effective immediately and will be implemented as old stock is depleted.