



# AT<sup>2</sup>LAS<sup>®</sup>

## THE NEXT STEP IN THE RELENTLESS EVOLUTION OF TECHNOLOGY

 **ADVANCED AMERICAN TECHNOLOGIES**

AT<sup>2</sup>LAS<sup>®</sup> from Advanced American Technologies is a proprietary composite resin, uniquely engineered to outperform steel, lead, aluminum, concrete and plastic. AT<sup>2</sup>LAS<sup>®</sup> has applications in the Mining, Construction, Oil & Gas, Automotive and Aerospace industries. Looking for a solution, Think AT<sup>2</sup>LAS!

APPLICATIONS	CUSTOMERS			
	Government/ Military	Industrial	International	Consumer
<b>Piping</b> (Oil & Gas, Water & Sewer)	✓	✓	✓	✓
<b>Construction</b> (Composite Roofing, Facades & Modular Units)	✓	✓	✓	✓
<b>Containers</b>	✓	✓	✓	✓
<b>Tooling</b> (Aerospace & Automotive)	✓	✓	✓	
<b>Renewables</b>	✓	✓	✓	✓



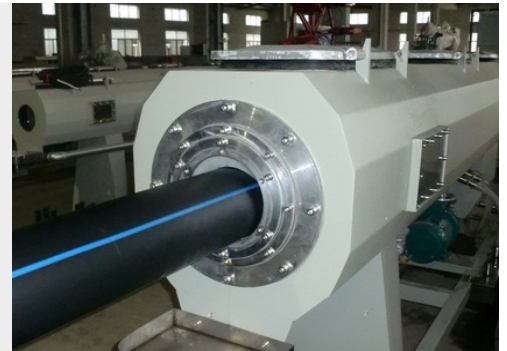
## PIPING

### USES

- Oil & Gas
- Sewer
- Water
- Pipeline Repairs
- Down Well Pipes/Sensors
- Storage Tanks

### CHARACTERISTICS

- Chemical, Abrasion, Fire & Corrosion Resistant
- High Operating Temperature >250°F
- Electronics Protection (Thermal Shielding)
- Continuous Mobile Extrusion Process (No Breaks)
- 100+ Year Lifespan
- Electrically Non-Conductive



## CONSTRUCTION & INFRASTRUCTURE

### USES

- Modular Buildings/Apartment Construction
- Composite Roofing
- Building Facades
- Sealants

### CHARACTERISTICS

- Replaces Multiple Products with One Easy-to-Install Product
- Castable into Various Shapes/Designs
- Sprayable
- Permits Inclusion of Wiring in Prefabricated Panels
- Highly Insulative





## CONTAINERS

### USES

- Rail, Sea & Land Containers
- Fresh, Refrigerated & Frozen Food Units
- Nuclear & Chemical Material Storage/ Transportation

### CHARACTERISTICS

- Modular Design Permits Optimized Transportation Loading
- No Size Limitations
- Non-Corroding & Impermeable
- Lightweight



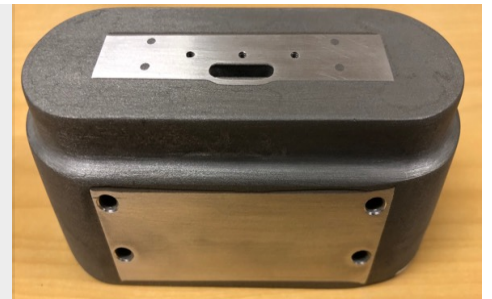
## AUTOMOTIVE & AEROSPACE

### USES

- Tooling (Hydroforming/Carbon Fiber Layup)
- Lightweight Components & Structures

### CHARACTERISTICS

- Tooling Solutions Emulate Invar Steel
- Castable Format Permits Rapid Development
- Lightweight
- Non-Corroding
- Repairable



## RENEWABLES

### USES

- Wind Turbine Housings/ Components
- Wind Turbine Hydrogen Fuel Cell Components
- Solar Panels
- Geothermal Applications

### CHARACTERISTICS

- Castable Format Provides Integrated Piping, Solar Cells & Wiring
- Lightweight
- Non-Corroding
- Superior Thermal Management



## CONTACT US

Want to see how Advanced American Technologies and AT<sup>2</sup>LAS can impact your industry? Visit [atlasaat.com](http://atlasaat.com) to learn more.